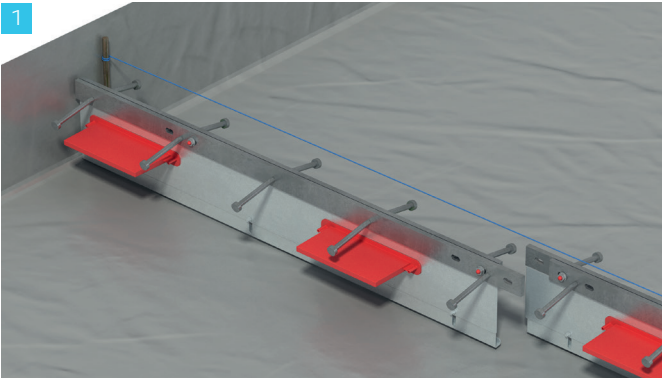


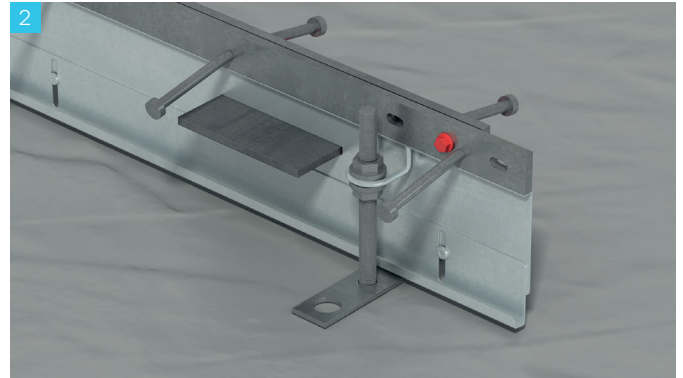
Installation Guide

Isedio ArmourJoint Adjustable using Leave-in-Place Feet

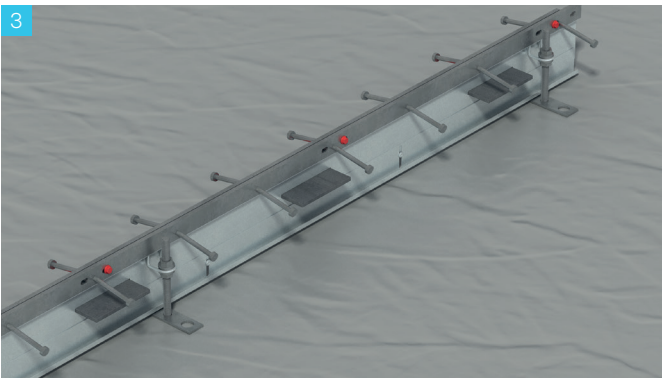
Installation



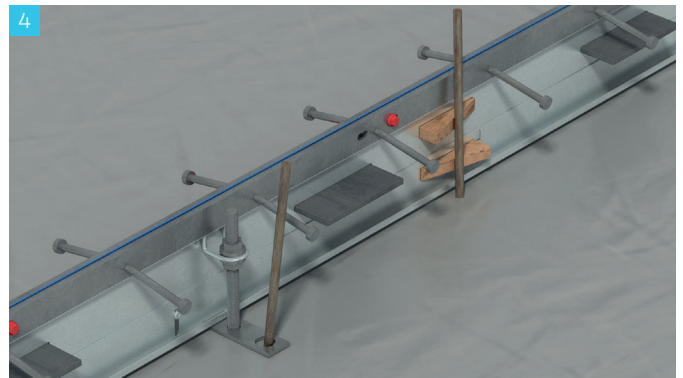
String out a line across the sub-base between two pins to aid in setting up the joint in the correct orientation and position. Working away from a column or an edge, cut the lapped joint of an ArmourJoint such that there is a clean end to butt to the column or edge. Be careful to work out saw cut positions and try to avoid cutting through any lapped joints of the ArmourJoint. Also work out the length of the last joint. It may be necessary to cut the first joint shorter to ensure the last joint is of a reasonable length.



Fit the leave-in-place feet to the joint by removing the uppermost flanged nut from the foot, inserting the threaded bar of the foot through the lug which is welded to the ArmourJoint divider plate and re-fitting the flanged nut. Attempt to position the foot to the correct height approximately to reduce the amount of adjustment later.



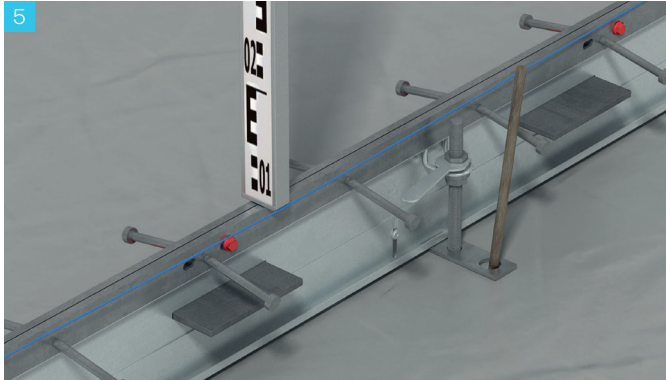
Once all of the feet are fitted, check the feet are orientated the correct way up, and the foot base plate with the pinning hole is on the side of the joint which will be the second side for casting.



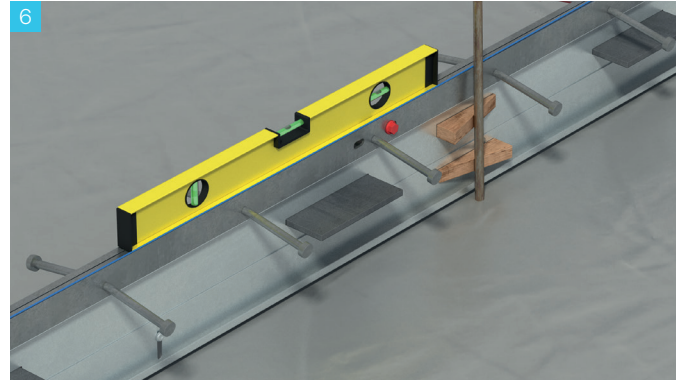
Place an ArmourJoint (with feet fitted) under the string line and position it accurately. Drive road form pins through the hole in each of the feet base plate holes. Use additional fixing pins (dia 14 x 600mm long) and timber wedges to brace the joint between each foot.

Installation Guide

Isedio ArmourJoint Adjustable using Leave-in-Place Feet



Connect as many ArmourJoints together as required. Set the joints to the correct height by adjusting the flanged nuts on the feet. Tighten the nuts once the joint is at the correct height. Use a staff on the top faces of the joint and level (theodolite) to obtain the correct height. Small adjustments to height can be made once the concrete is poured as the joints may move slightly with the thrust of the concrete.



Ensure the adjustable bottom section of the divider plate is touching the slipo membrane on the sub-base. The ArmourJoints are now prepared and concrete can be cast against them. Using a small spirit level check the top edges of the joint are horizontal. Make adjustments to the joint via the wooden wedges to the the joint plumb.



Once the first side of the joint has been cast with concrete and has cured, the second side (with the leave-in-place feet) can be cast. Remove the fixing pins which hold the feet in place and remove the intermediate bracing pins and wooden wedges. Shorten the threaded rod using an angle grinder if necessary. Cast concrete to the second side.