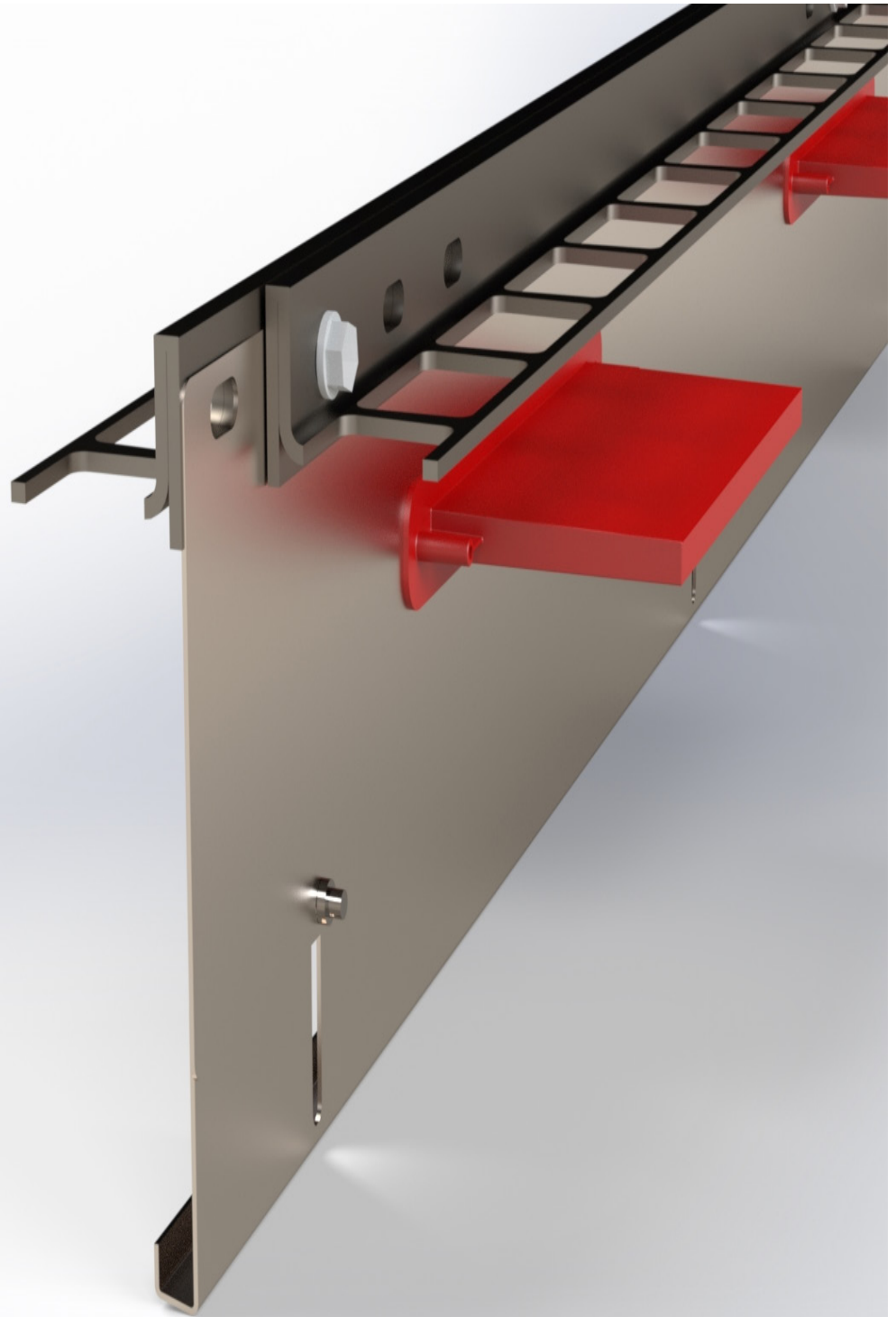


ARMOURJOINT-PRO ADJUSTABLE



www.isedio.com

Iседio Limited. Unit 10 Jubilee Park, Badger's Cross Lane, Somerton, Somerset, TA11 7JF, UK.
T: +44 (0) 1458 270 600 E: info@isedio.com Registered in England and Wales: 07025519

Copyright © 2018 Iседio Limited. Errors and omissions excepted. Iседio Limited reserves the right to revise this documentation and to make changes in content from time to time without obligation on the part of Iседio Limited to provide notification of such revision or change. Information contained within this document is approximate.

PRODUCT DESCRIPTION & USES

ARMOURJOINT-PRO ADJUSTABLE is a leave-in-place formwork, load transfer and edge protection joint system suitable for heavy duty industrial concrete floors.

The joint system comprises two top strips, a divider plate, load transfer plate dowels and sleeves. The joint is designed such that once cast in-situ, as the two slab panels either side of the joint begin to cure and shrink, the joint separates such that one slab panel has the sleeve and top strip and the other has the top strip, divider plate and dowel. The dowel bridges across the joint and is embedded in both slab panels.

Formwork for casting a concrete slab is achieved by the vertical divider plate which supports the top strip edge protection and load transfer plate dowels.

Slab arris protection is provided by way of cold rolled steel top strips each with a perforated steel wing that embeds in the concrete thus retaining the top strip in the concrete.

Load transfer across the joint is achieved by asymmetric plate dowels and sleeves. The plate dowels are attached to the vertical divider plate and the sleeves are held in place under friction and are detachable as the joint opens up.

MATERIAL SPECIFICATION

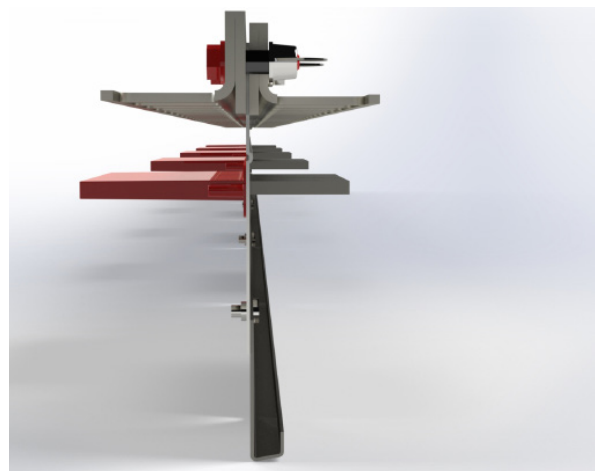
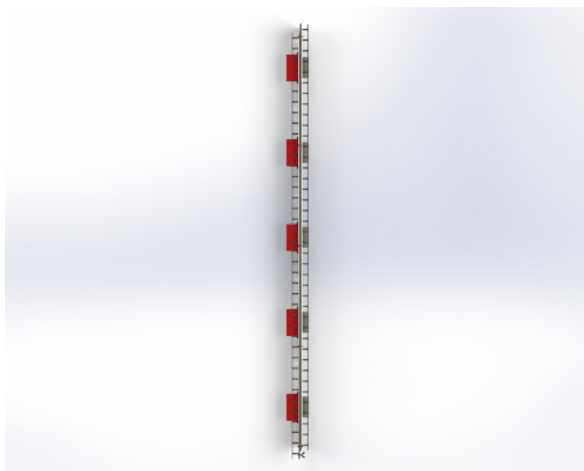
COMPONENT	MATERIAL
TOP STRIPS	EACH STRIP IS 8MM THICK COLD ROLLED STEEL (CAN BE SUPPLIED HOT DIP GALVANISED)
FRANGIBLE FASTENER	NYLON
DIVIDER PLATE	STEEL DC01 TO BS EN 10130:2006
LOAD TRANSFER DOWEL PLATE	8MM & 12MM - S355 STEEL TO BS EN 10025-2:2004
SLEEVE	8MM & 12MM - PP

TECHNICAL DATA

DESCRIPTION	DIMENSION & TOLERANCE
JOINT LENGTH	3000MM +/-2.0MM
STRAIGHTNESS	+/-0.5MM IN 600MM
GENERAL DIMENSIONAL TOLERANCE	DIMENSIONS < 12MM +/-0.5MM DIMENSIONS > 12MM +/-2.0MM

Information on load transfer capacities can be found on the Load Transfer Capacity Datasheet.

PLAN AND END IMAGES



PACKAGING INFORMATION

5 X 8MM DOWELS (600MM CENTRES)

JOINT (MM)	QTY & METRES OF JOINT PER BUNDLE	APPROX BUNDLE WEIGHT INC PACKAGING (KG)	MAX NO OF BUNDLES & METRES PER TRUCK
100-130MM	48 OFF - 144M	1423 KG	16 BUNDLES - 2304M
130-150MM	40 OFF - 120M	1238 KG	16 BUNDLES - 1920M
150-200MM	40 OFF - 120M	1266 KG	16 BUNDLES - 1920M
200-250MM	24 OFF - 72M	827 KG	16 BUNDLES - 1152M
250-300MM	24 OFF - 72M	936 KG	16 BUNDLES - 1152M

5 X 12MM DOWELS (600MM CENTRES)

JOINT (MM)	QTY & METRES OF JOINT PER BUNDLE	APPROX BUNDLE WEIGHT INC PACKAGING (KG)	MAX NO OF BUNDLES & METRES PER TRUCK
100-130MM	48 OFF - 144M	1590 KG	15 BUNDLES - 2160M
130-150MM	40 OFF - 120M	1378 KG	16 BUNDLES - 1920M
150-200MM	40 OFF - 120M	1406 KG	16 BUNDLES - 1920M
200-250MM	24 OFF - 72M	910 KG	16 BUNDLES - 1152M
250-300MM	24 OFF - 72M	1020 KG	16 BUNDLES - 1152M